

UNIT 102
732pi²

2 CHAMBRES

SEJOUR - SALLE A MANGER
10'-4" X 17'-3"

CUISINE
10'-9" X 10'-0"

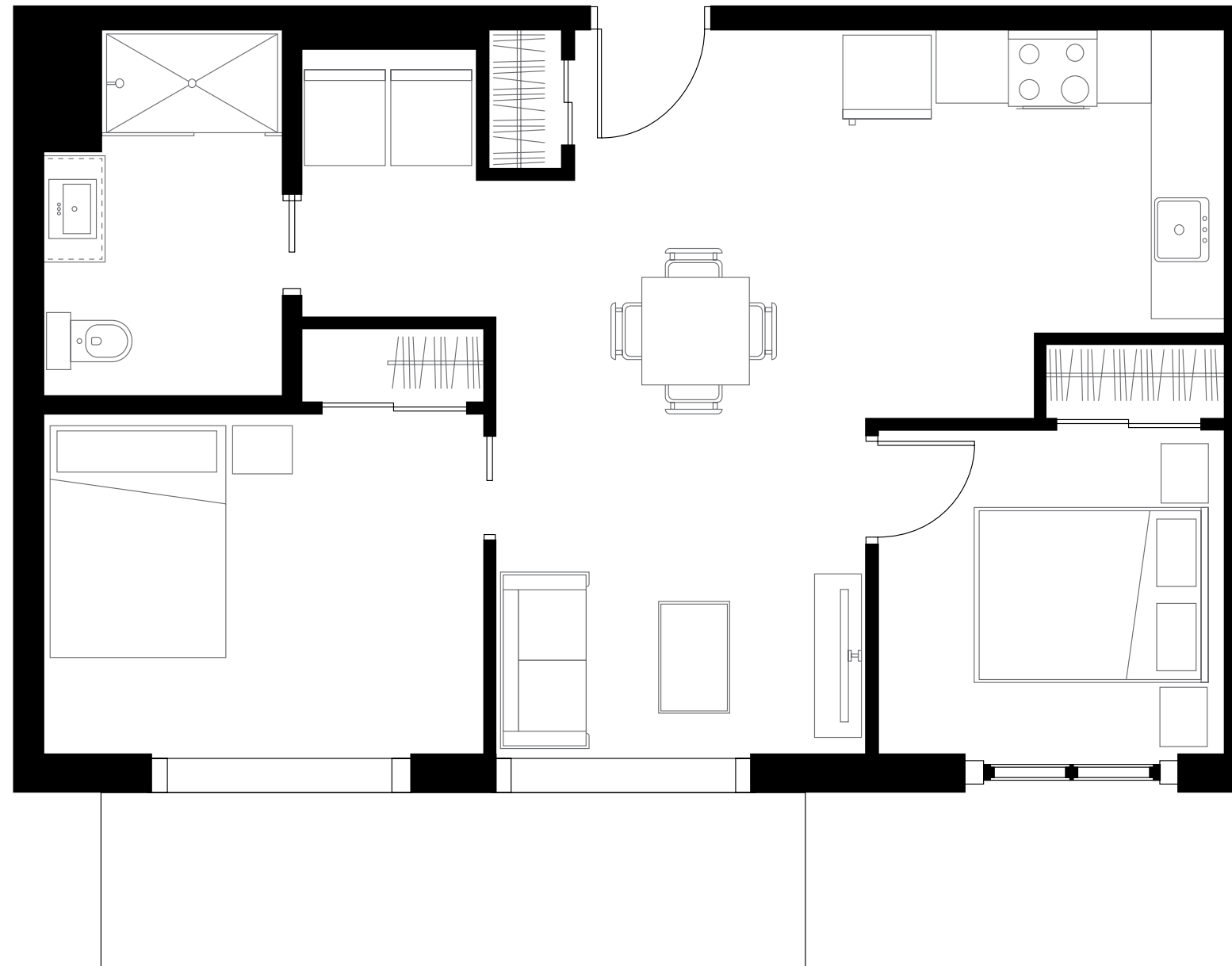
CHAMBRE 1
9'-0" X 9'-7"

CHAMBRE 2
12'-4" X 9'-1"

WALK-IN - SALLE DE LAVAGE
3'-11" X 5'-5"

SALLE DE BAIN
6'-8" X 7'-7"

HALL D'ENTRÉE
2'-11" X 10'-4"



UNIT 103, 203, 303
701pi²

2 CHAMBRES

SEJOUR - SALLE A MANGER
11'-5" X 12'-7"

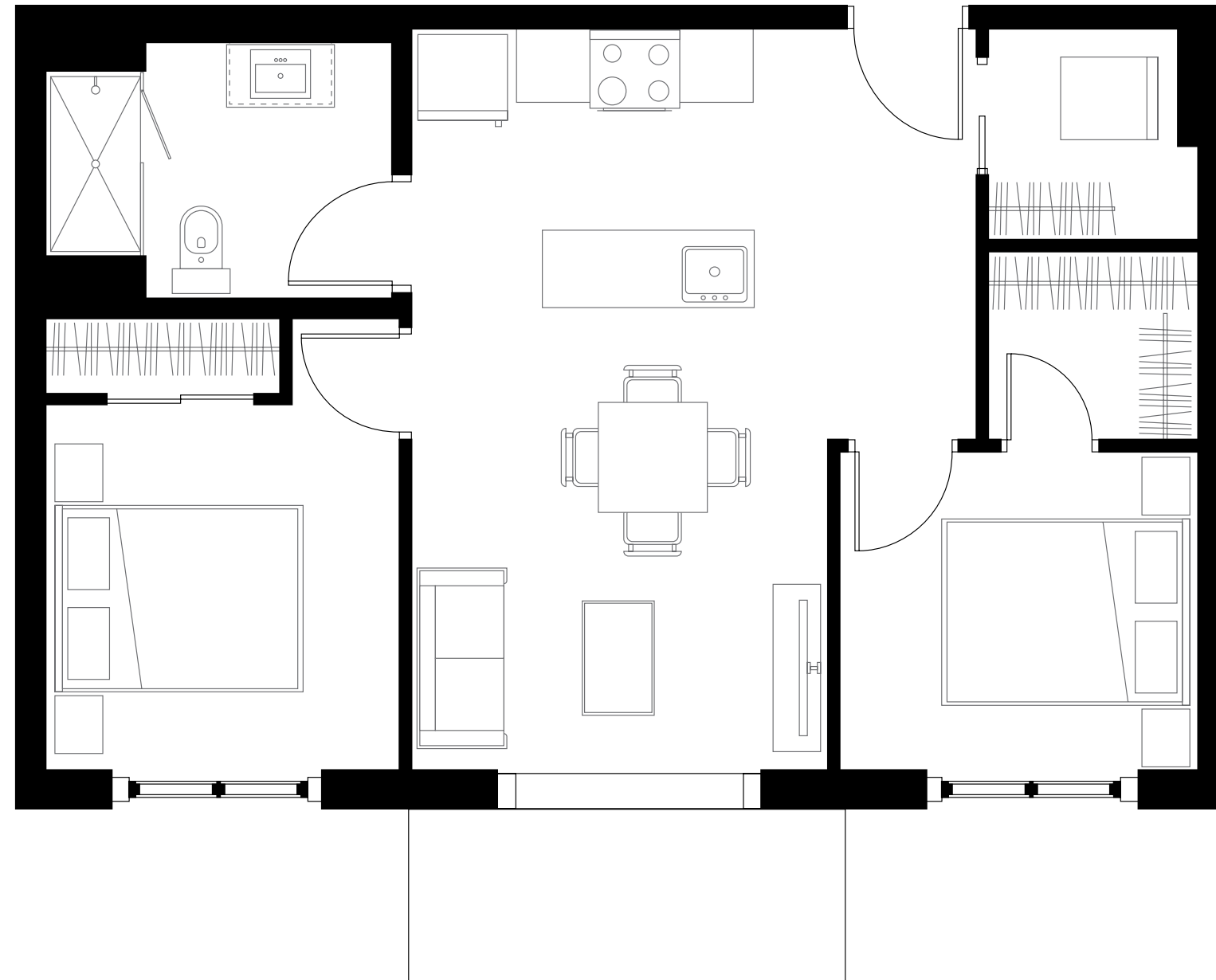
CUISINE
7'-7" X 15'-6"

CHAMBRE 1
8'-7" X 9'-10"

CHAMBRE 2
9'-7" X 9'-11"

WALK-IN - SALLE DE LAVAGE
5'-8" X 10'-10"

SALLE DE BAIN
6'-11" X 6'-10"



UNIT 104
703pi²

2 CHAMBRES

SEJOUR - SALLE A MANGER
11'-5" X 12'-7"

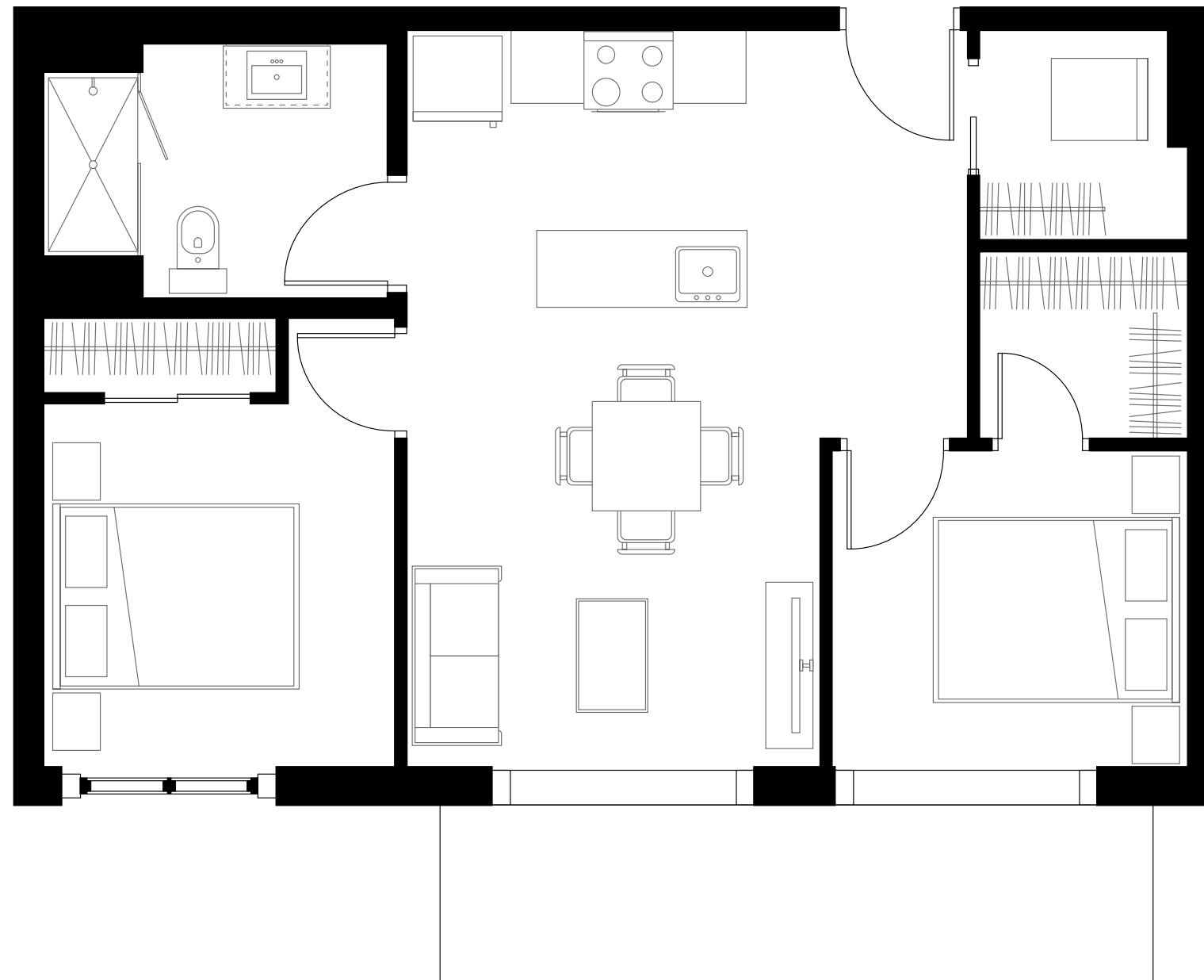
CUISINE
7'-7" X 15'-6"

CHAMBRE 1
8'-7" X 9'-10"

CHAMBRE 2
9'-7" X 9'-11"

WALK-IN - SALLE DE LAVAGE
5'-8" X 10'-10"

SALLE DE BAIN
6'-11" X 6'-10"



UNIT 105
730pi²

2 CHAMBRES

SEJOUR - SALLE A MANGER
10'-4" X 20'-2"

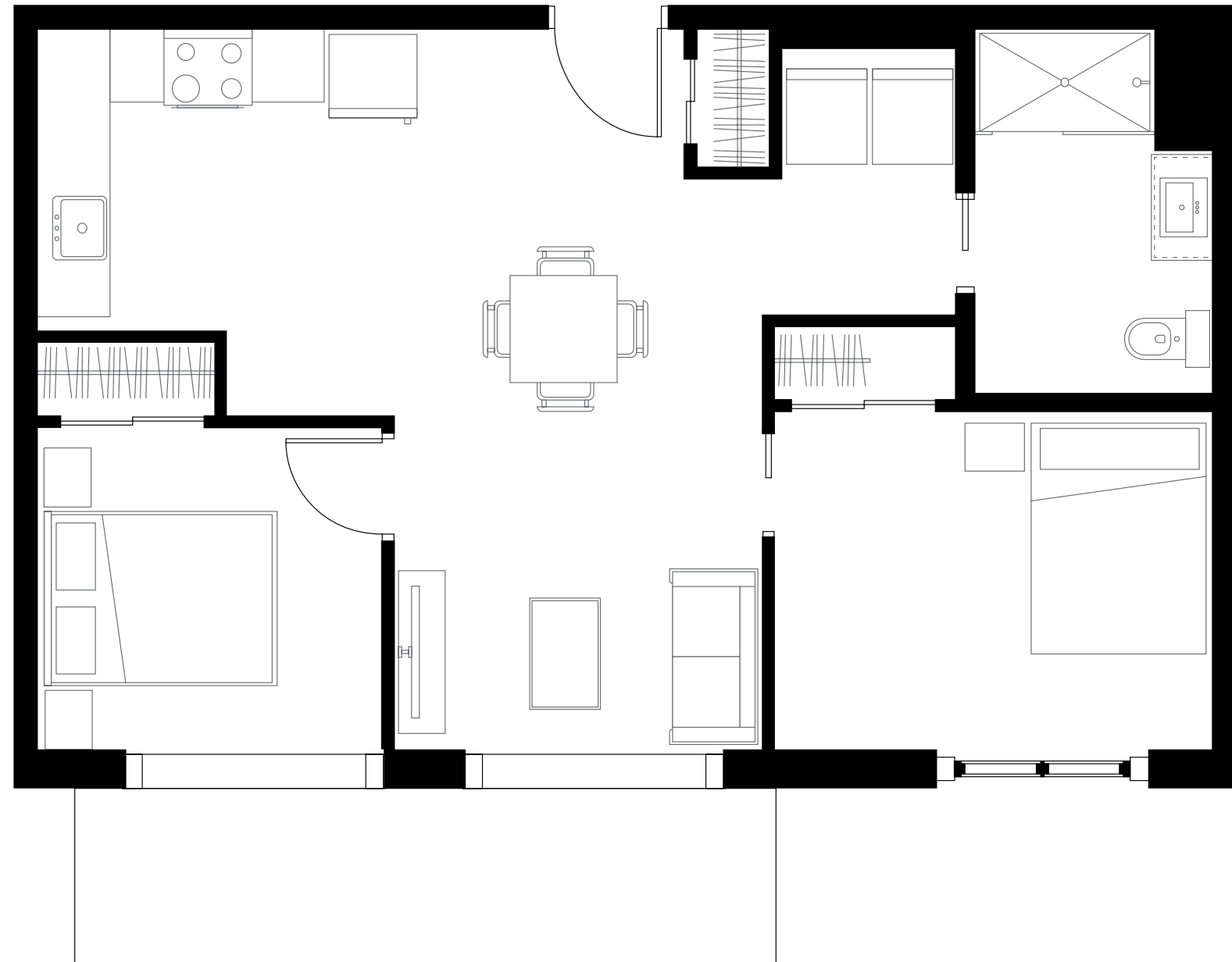
CUISINE
10'-9" X 10'-0"

CHAMBRE 1
12'-3" X 9'-1"

CHAMBRE 2
9'-0" X 9'-7"

WALK-IN - SALLE DE LAVAGE
3'-11" X 5'-5"

SALLE DE BAIN
7'-7" X 6'-7"



UNIT 108

758pi²

2 CHAMBRES

SEJOUR - SALLE A MANGER

10'-9" X 14'-10"

CUISINE

7'-7" X 11'-2"

CHAMBRE 1

9'-1" X 9'-6"

CHAMBRE 2

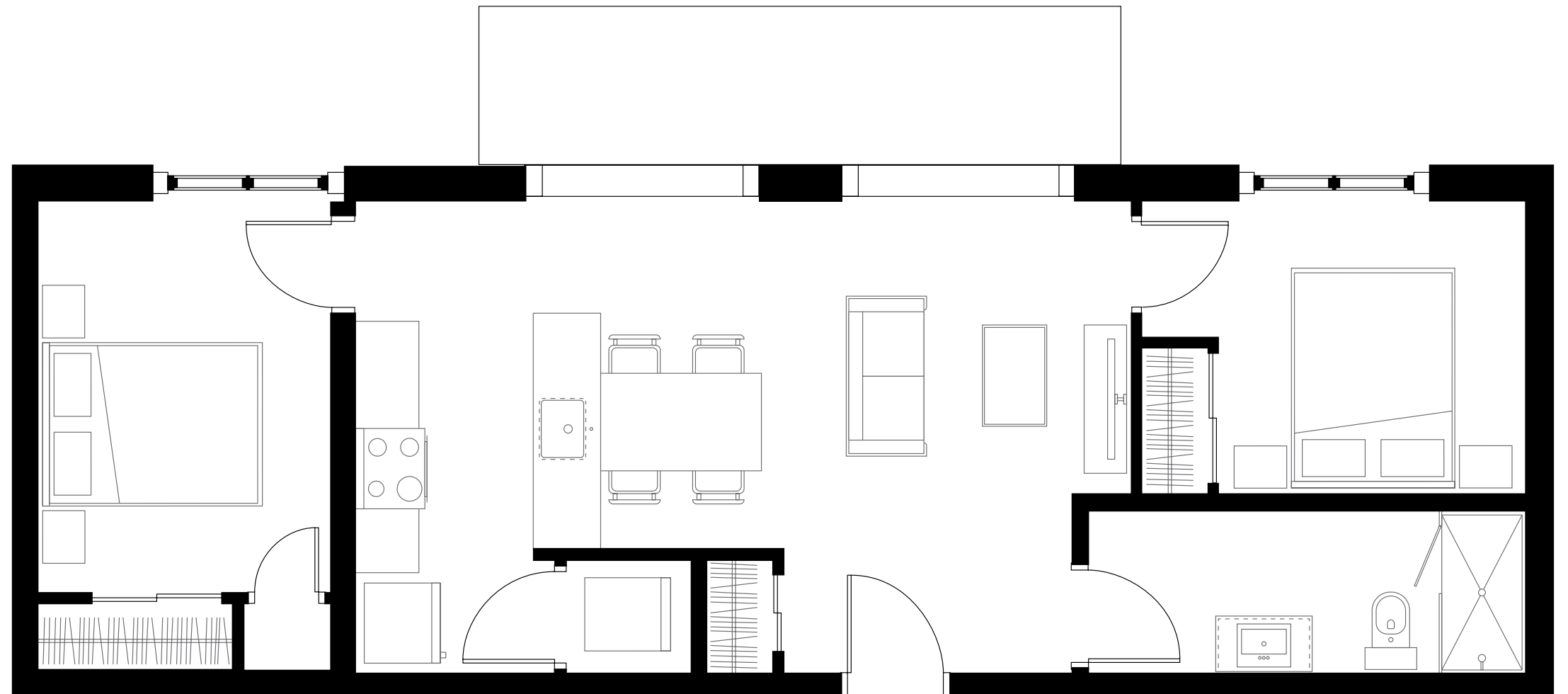
9'-1" X 12'-2"

SALLE DE BAIN

5'-0" X 13'-7"

HALL D'ENTRÉE

5'-7" X 8'-11"



UNIT 108
758pi²

2 CHAMBRES

UNIT 200, 300
886pi²

2 CHAMBRES

SEJOUR - SALLE A MANGER
10'-10" X 19'-2"

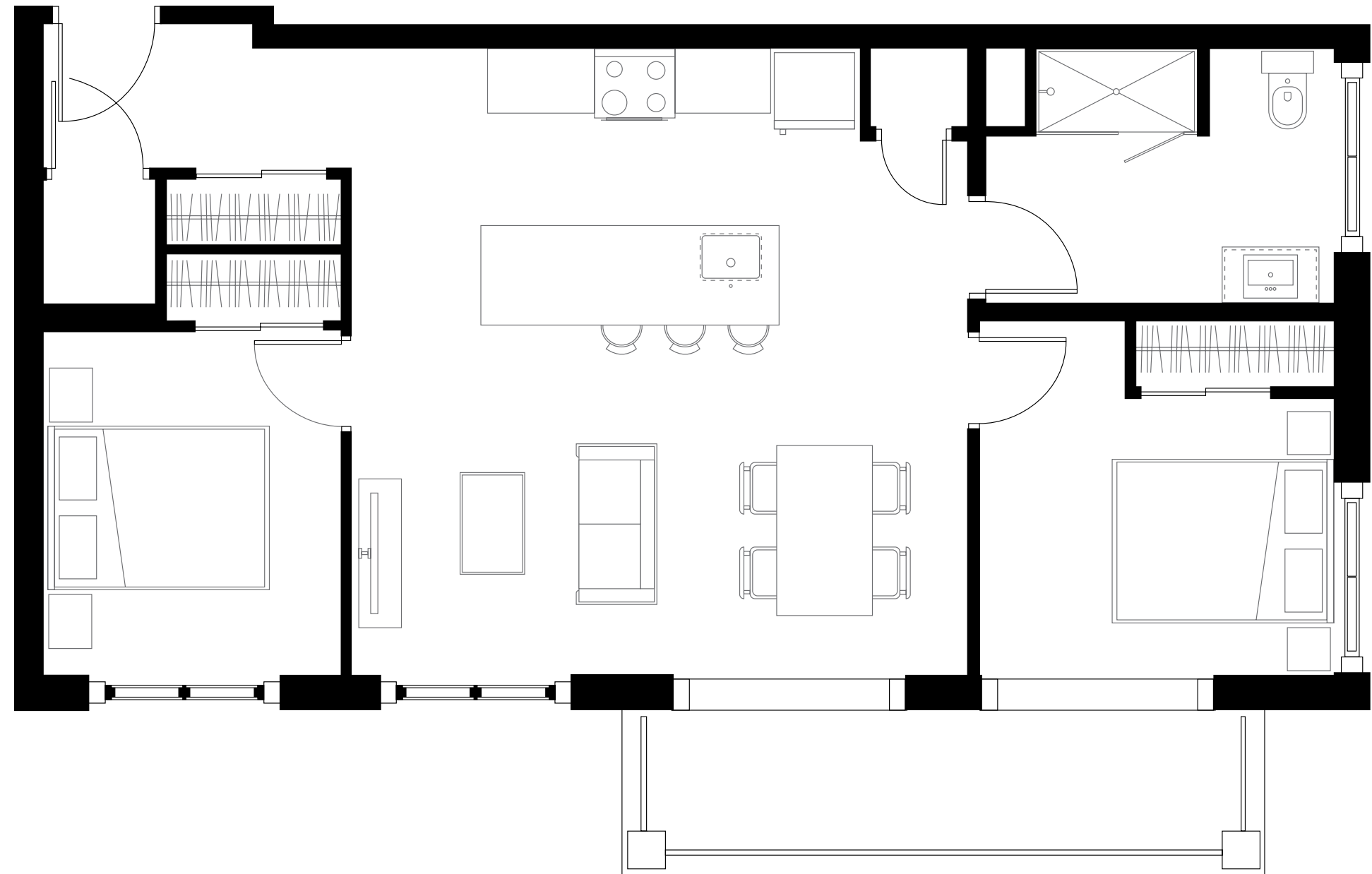
CUISINE
8'-7" X 19'-2"

CHAMBRE 1
10'-11" X 11'-0"

CHAMBRE 2
9'-3" X 10'-7"

SALLE DE BAIN
7'-11" X 5'-3"

HALL D'ENTRÉE
9'-8" X 4'-5"



UNIT 201, 301
739pi²

2 CHAMBRES

SEJOUR - SALLE A MANGER
11'-10" X 12'-7"

CUISINE
9'-5" X 7'-7"

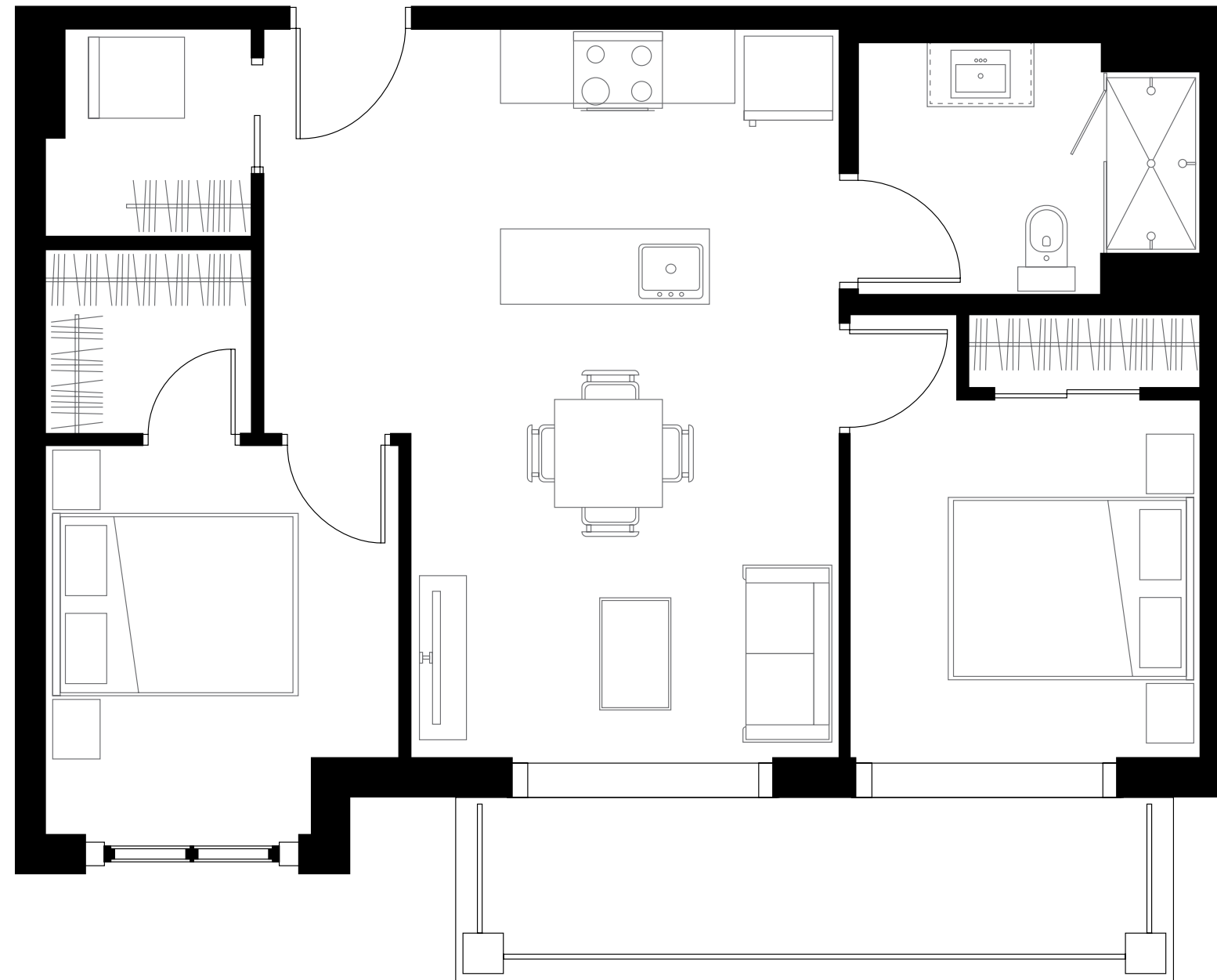
CHAMBRE 1
12'-3" X 9'-8"

CHAMBRE 2
9'-10" X 10'-9"

WALK-IN - SALLE DE LAVAGE
5'-8" X 10'-10"

SALLE DE BAIN
6'-7" X 7'-0"

HALL D'ENTRÉE
6'-7" X 11'-2"



UNIT 202, 302
751pi²

2 CHAMBRES

SEJOUR - SALLE A MANGER
10'-4" X 16'-0"

CUISINE
10'-7" X 10'-9"

CHAMBRE 1
11'-2" X 9'-7"

CHAMBRE 2
12'-4" X 9'-3"

WALK-IN - SALLE DE LAVAGE
3'-9" X 5'-5"

SALLE DE BAIN
7'-5" X 6'-8"

HALL D'ENTRÉE
7'-6" X 4'-2"



UNIT 204, 304
721pi²

2 CHAMBRES

SEJOUR - SALLE A MANGER
11'-6" X 12'-7"

CUISINE
9'-5" X 7'-7"

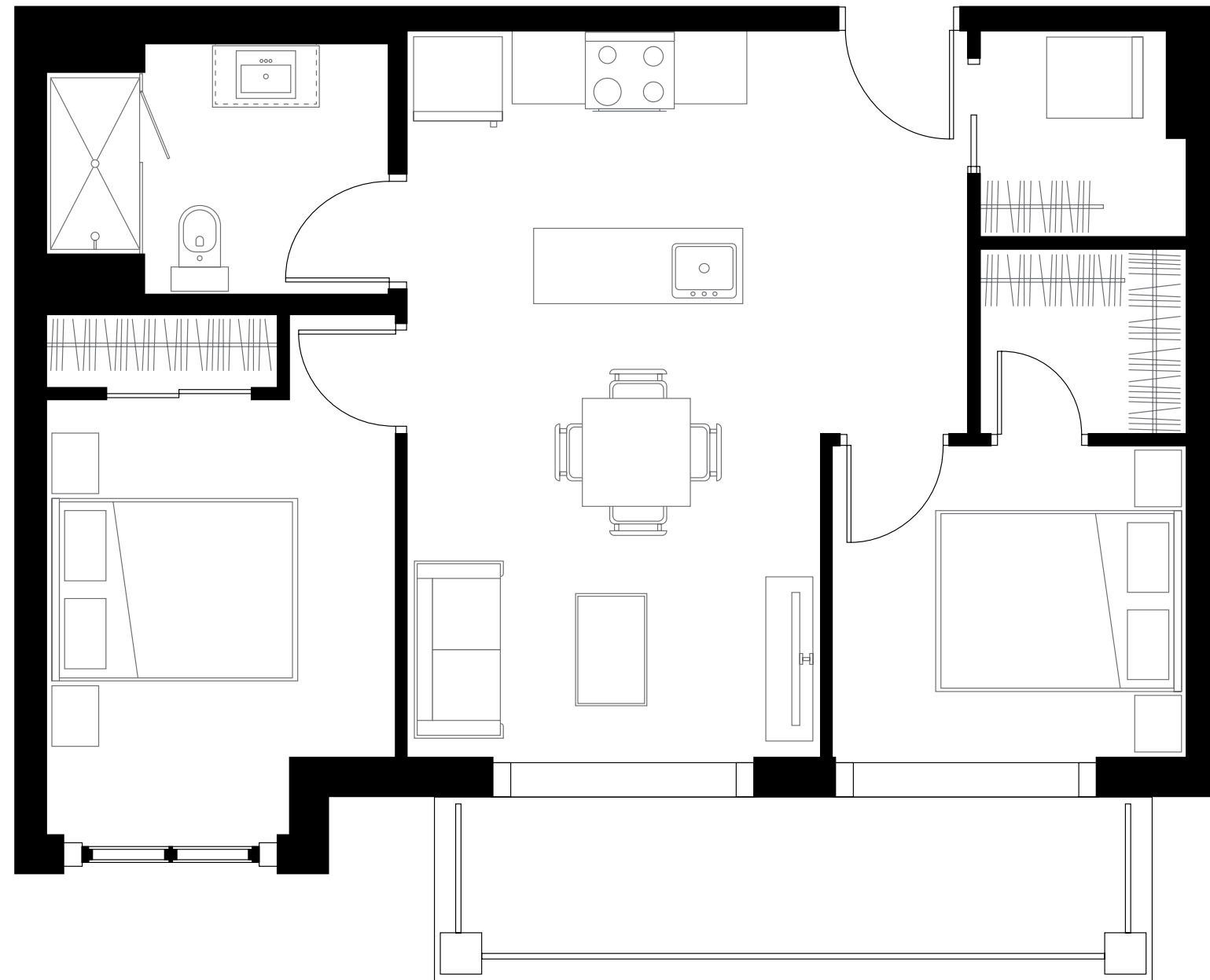
CHAMBRE 1
9'-10" X 8'-7"

CHAMBRE 2
9'-8" X 12'-1"

WALK-IN - SALLE DE LAVAGE
5'-8" X 10'-10"

SALLE DE BAIN
6'-10" X 6'-11"

HALL D'ENTRÉE
6'-2" X 11'-2"



UNIT 205, 305
750pi²

2 CHAMBRES

SEJOUR - SALLE A MANGER
10'-4" X 16'-0"

CUISINE
10'-7" X 10'-9"

CHAMBRE 1
12'-3" X 11'-5"

CHAMBRE 2
9'-7" X 9'-0"

WALK-IN - SALLE DE LAVAGE
5'-5" X 3'-9"

SALLE DE BAIN
7'-5" X 6'-7"

HALL D'ENTRÉE
4'-2" X 7'-6"



UNIT 206, 306
844pi²

2 CHAMBRES

SEJOUR - SALLE A MANGER
10'-8" X 19'-4"

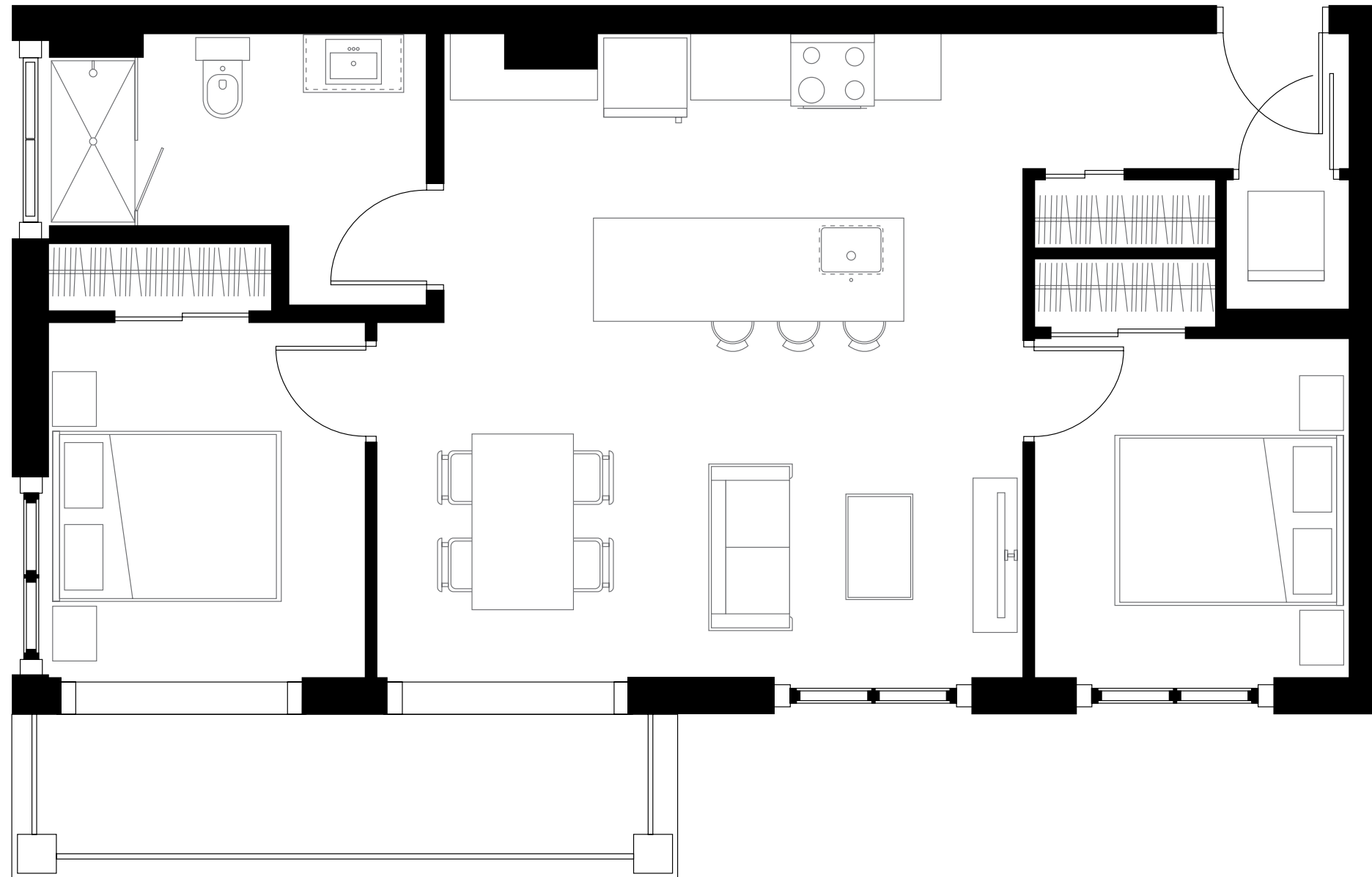
CUISINE
8'-7" X 17'-4"

CHAMBRE 1
10'-2" X 9'-5"

CHAMBRE 2
9'-6" X 10'-7"

SALLE DE BAIN
8'-1" X 8'-8"

HALL D'ENTRÉE
4'-0" X 9'-9"



UNIT 207, 307
841pi²

2 CHAMBRES

SEJOUR - SALLE A MANGER
10'-11" X 19'-4"

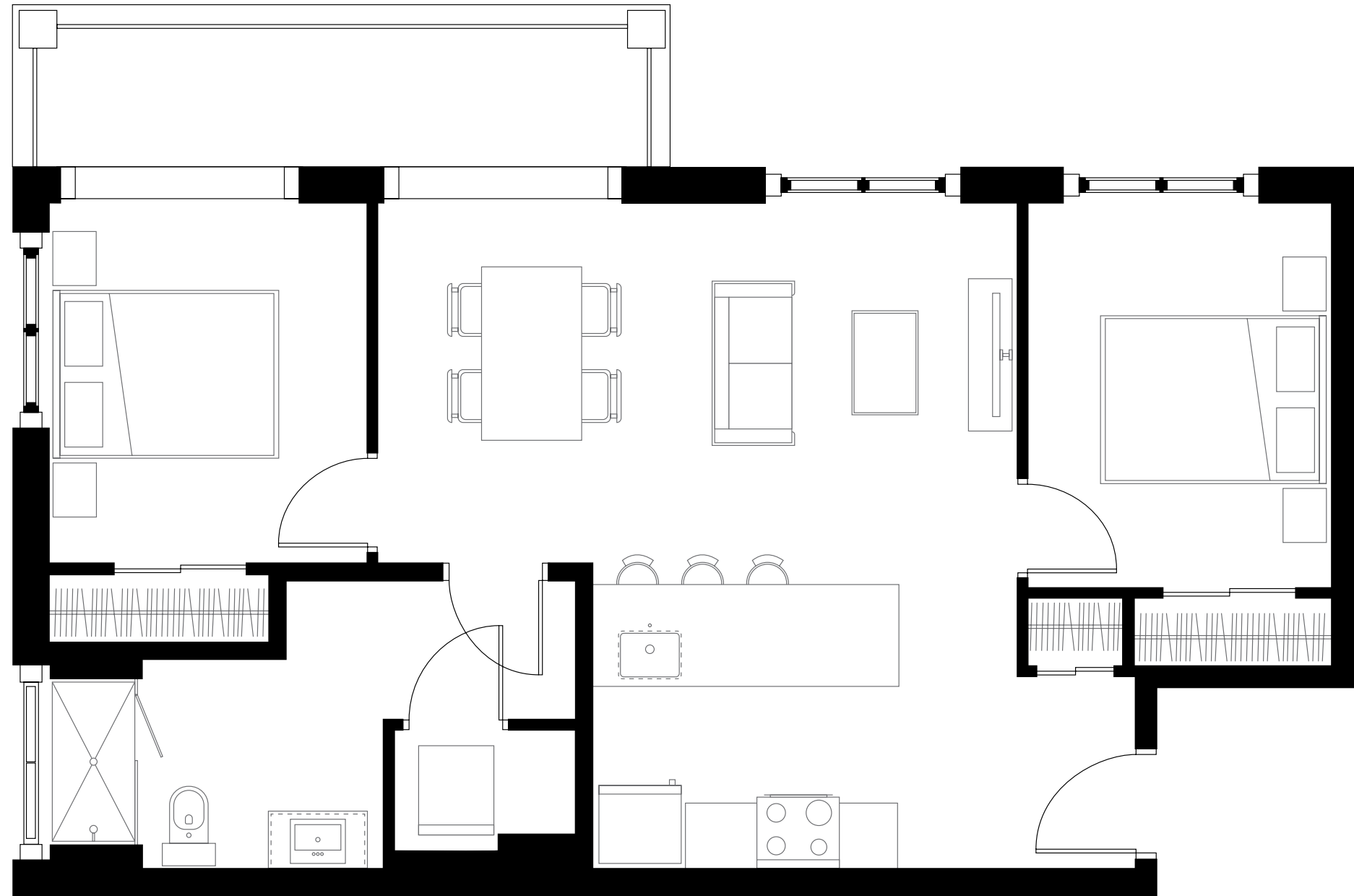
CUISINE
12'-10" X 9'-3"

CHAMBRE 1
11'-7" X 9'-2"

CHAMBRE 2
10'-11" X 9'-7"

SALLE DE BAIN
8'-9" X 13'-3"

HALL D'ENTRÉE
5'-10" X 3'-7"



UNIT 209, 309
766pi²

2 CHAMBRES

SEJOUR - SALLE A MANGER
10'-1" X 9'-11"

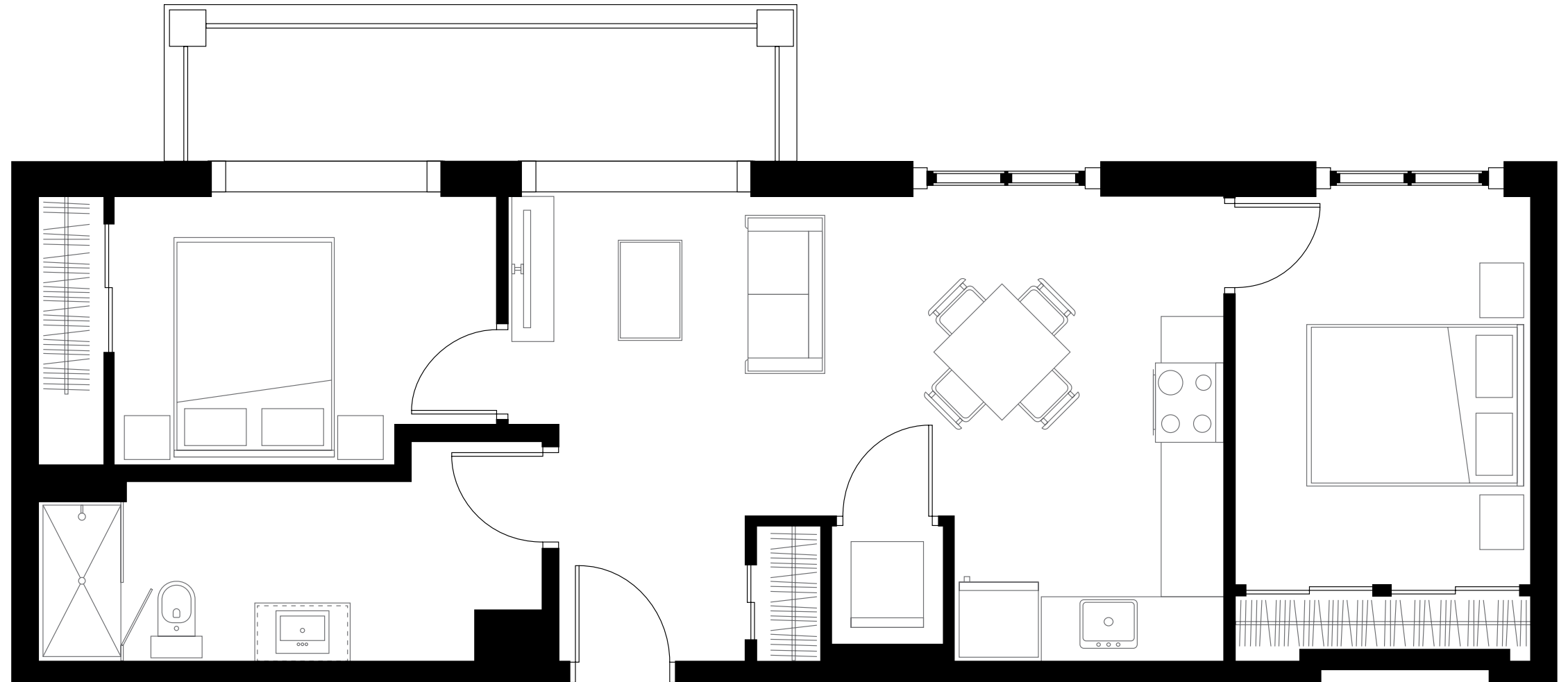
CUISINE
12'-7" X 14'-8"

CHAMBRE 1
12'-3" X 9'-3"

CHAMBRE 2
8'-5" X 12'-0"

SALLE DE BAIN
13'-2" X 6'-11"

HALL D'ENTRÉE
5'-10" X 4'-7"



UNIT 210, 310
728pi²

2 CHAMBRES

SEJOUR - SALLE A MANGER
12'-2" X 10'-1"

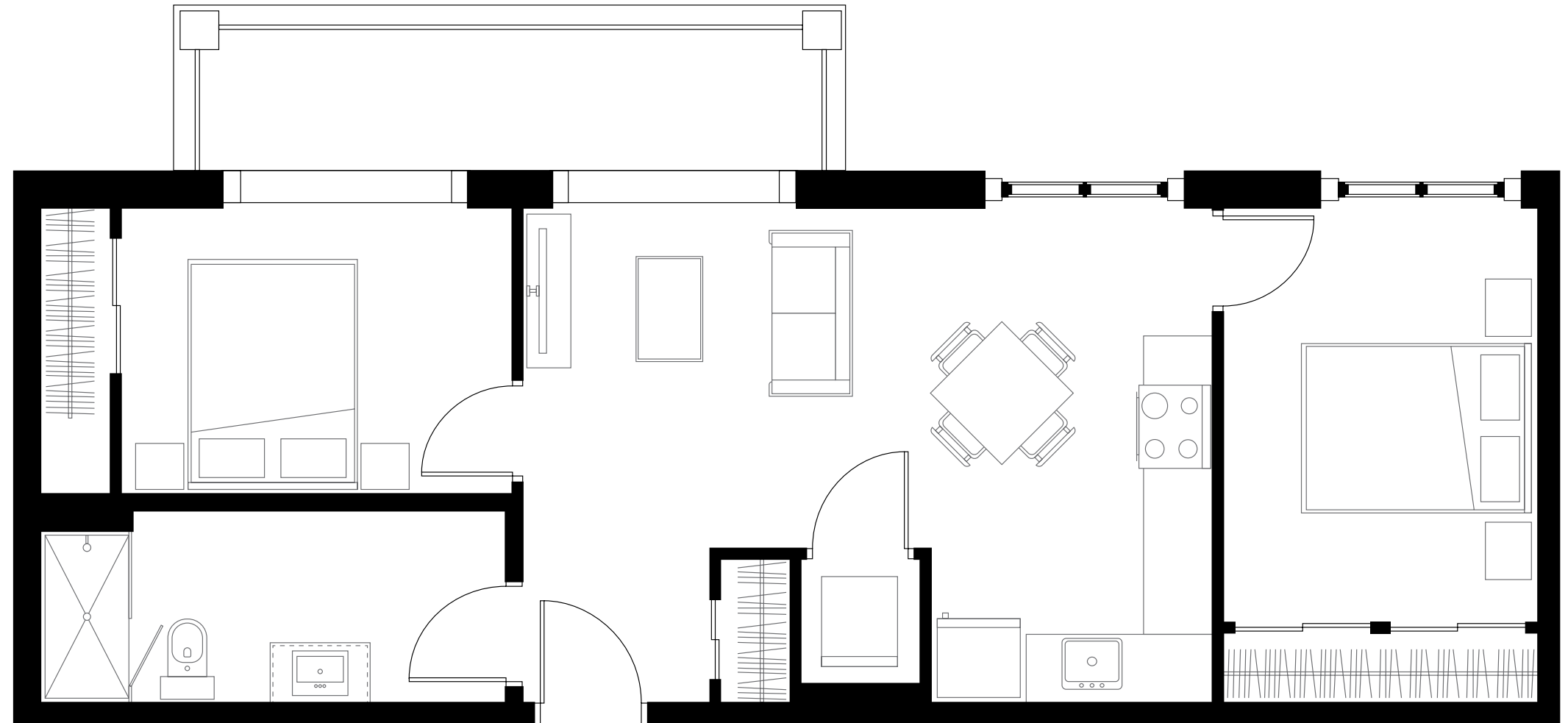
CUISINE
8'-4" X 14'-8"

CHAMBRE 1
9'-3" X 12'-3"

CHAMBRE 2
8'-5" X 11'-7"

SALLE DE BAIN
5'-8" X 11'-1"

HALL D'ENTRÉE
5'-6" X 4'-7"



UNIT 211, 311
882pi²

2 CHAMBRES

SEJOUR - SALLE A MANGER
10'-7" X 17'-10"

CUISINE
9'-8" X 17'-10"

CHAMBRE 1
11'-1" X 9'-2"

CHAMBRE 2
10'-4" X 9'-1"

WALK-IN - SALLE DE LAVAGE
6'-10" X 3'-6"

SALLE DE BAIN
10'-10" X 8'-0"

HALL D'ENTRÉE
4'-0" X 6'-6"

